



**PHILLY
HOUSE**

WHAT DO YOU VALUE?



**2022-2023
ANNUAL REPORT**



WHEN YOUR
VALUES ARE
CLEAR TO
YOU, MAKING
DECISIONS
BECOMES
EASIER.

ROY E. DISNEY



VALUES WE LIVE BY



DIGNITY

Everyone deserves to be treated with respect through intentional relationship.



HOPE

Everyone has God-given potential and the opportunity for transformation.



COMPASSION

Everyone is hurting and in need of God's love and mercy.



BELONGING

Everyone is unconditionally welcomed and treated like family.



EXCELLENCE

Everyone is served with the highest standards of quality and intention.

Thanksgiving annually engages community groups and caring individuals, such as decorating placemats for our Dining Room.





REV. JEREMY MONTGOMERY,
PRESIDENT & CEO

MESSAGE FROM PHILLY HOUSE'S CEO

WHAT DO YOU VALUE?

Since 1878, serving Philadelphia's homeless, hungry and hurting has been our identity. Put another way, that's more than 53,000 days and nights of meeting the needs of the disheartened, the people that people forget, but God never does.

Over the 365 days of 2023, **your gifts helped us provide shelter to 1,753 unique, individual men—almost 30% of all homeless men sheltered in Philadelphia.**

Some stayed one night, others for 180 or more. That's in addition to the nearly 100,000 meals served to women, families and men who came to us hungry – all made possible by you. We are so grateful.

But for all of the meals served and all of the beds filled, the heart of Philly House isn't just mattresses and food.

At the heart of all we do is our call to demonstrate the love of Jesus Christ by activating the God-given potential for life transformation for everyone who walks through our doors. **When we ask, "What do you value?" there are so many answers.** Why? Because we do so much more than meet daily physical needs.

I've seen how God uses Philly House to transform the lives of Shelter Guests, volunteers and donors. For our Shelter Guests who dared again to dream - and for volunteers and donors who felt no purpose anymore – "Hope Lives Here!" at Philly House.

At Philly House, surface-level charity doesn't make it. **Our values go far beyond**

mere handouts. We empower those we serve through trauma-informed care, an approach that emphasizes holistic, relational, long-term engagement with our guests.

By addressing homelessness with 21st century methods combined with Christian **COMPASSION**, we serve everyone who enters our doors—rich and poor—with the values we declare to the world: **EXCELLENCE, DIGNITY, HOPE**, and a sense of **BELONGING**.

We believe in the universal God-given potential in everyone. We offer volunteers and donors opportunities to participate in a life-changing, empowering service and growth. By giving voice to those in the margins, our supporters encourage and walk alongside those we serve by modeling transformation in their own lives.

Let me ask a favor of you. **Read the stories within these pages. Learn about our values.** Reflect on the lives of our guests, volunteers and staff. **Join us.** In 2024, become part of our identity, built on the foundation of our Christian faith.

Go with the promise that at Philly House, we will continue to love each person whom we serve, and our values will drive us into efforts to always provide a safe, clean refuge from the street with our shelter and meals.

But, God's desire is for so much more. **What do you value?**





HOPE IS... “TO GET A SECOND CHANCE AT LIFE, GET MYSELF TOGETHER, AND BECOME A RESPECTABLE CITIZEN WITH A NEW LOOK ON LIFE.”

MACK, SHELTER GUEST

EXCELLENCE IS... “SERVING THE PROPER NEEDS IN MY TIME OF NEED. EVERYTHING ISSUED COVERS THE BASICS TO RE-ENTER [SOCIETY] AND MAKE MY LIFE BETTER.”

DAMEON, SHELTER GUEST



THE WORLD WE WANT TO SEE

OUR VISION

That the homeless, hungry and hurting in Philadelphia will achieve stability and self-sufficiency through a holistic transformation while experiencing the unconditional love of God.

HOW WE ARE TRANSFORMING THE WORLD WE ENVISION

OUR MISSION

We open our doors every day with a welcoming spirit of Christian compassion, walking alongside the homeless, hungry and hurting of Philadelphia so that they may experience the love of God through acts of mercy, dignity and respect. More than just a safe space, warm bed and a hot meal, we empower everyone we serve through deep, intentional engagement with compassionate programs and trauma-informed care—activating their God-given potential for life transformation.

ANNUAL STATS

98,139

total meals served in 2023



39,870

Total 'bed nights' -or, 109 avg/night

266

Total older adults (60+)

126

Total 'youth' (18-24)





DIGNITY: THROUGH INTENTIONAL RELATIONSHIP



Weekly, prayer teams gather to pray over each shelter bed, as well as clean and sanitize our 3rd Floor dormitory.

MATTHEW 7:12: SO IN EVERYTHING, DO TO OTHERS WHAT YOU WOULD HAVE THEM DO TO YOU, FOR THIS SUMS UP THE LAW AND THE PROPHETS.

DIGNITY is... “Respecting a person enough to build up their self-esteem and honor, it’s like getting a sense of myself back.” (Mark)

DIGNITY is Baseline

“DIGNITY underpins everything we do,” says Jeremy Montgomery. “If guests don’t feel DIGNITY, we’ve lost them. They won’t open themselves to anything we have to offer.”

“The best example? Jesus! He knew that DIGNITY starts with letting someone know that you see them. Take Zacchaeus (Luke 19:1–10). Maybe you know the song, ‘Zacchaeus Was a Wee Little Man’? Jesus recognized his existence even when the community shunned him. For Zacchaeus, the DIGNITY that Jesus offered was transformational!”



While treating someone with DIGNITY is about acknowledgement, empathy, and validation, it’s more! Underlying it all is environment.

“DIGNITY is a big part of my job,” Carmen tells us. “The Philly House building is more than 60 years old, designed to store film, not house people. It’s a challenge to keep it clean, safe and well run. But that’s okay, because a clean, safe and well-run home is what everyone deserves.”

Our Facilities Director Carmen has a lifetime of experience in bringing DIGNITY to the world around him. “I started in plumbing school,” he tells us. “From there, I’ve work at hotels, a local seminary, a medical facility and a Catholic parish.” That accumulated experience from seeing the issues that come with how people use - and sometimes abuse - their surroundings even in faith communities, is why Carmen was perfect for Philly House.

“Sure, we offer great services, but a lot of guests wouldn’t take advantage of them if they didn’t feel safe,” Carmen reminds us. “And a building that looks good and operates right just brings more Shelter Guests to us. To me, offering a home where everyone feels welcome is what DIGNITY is all about.”

“A lot of people’s vision of a homeless shelter is dank, dirty and cold,” Jeremy chimes in. “They don’t think that the homeless deserve any better, or that they even care. Let me tell you: they do care, and they do notice. We encourage guests to report when something’s wrong. Because Carman does such a good job, our guests want to keep this place looking great and working well.”

Clean. Safe. Focused on the guest’s needs. That’s how DIGNITY starts. It’s baseline. And, it leads to life transformation.

ANNUAL SNAPSHOT

\$62,155



Annual Cost of Cleaning Supplies



\$98,300

Annual Cost of Repairs & Maintenance

\$19,046



Annual Cost of Trash Removal



HOPE: GOD-GIVEN POTENTIAL FOR TRANSFORMATION.

ROMANS 15:13: MAY THE GOD OF HOPE FILL YOU WITH ALL JOY AND PEACE IN BELIEVING, SO THAT BY THE POWER OF THE HOLY SPIRIT YOU MAY ABOUND IN HOPE.

HOPE for the Homeless Spans the Years

“As a child in Delaware County in the 1950s, I remember hearing live broadcasts of the Sunday Breakfast Rescue Mission services on WPEN radio,” volunteer Phil Tackett recalls. **“My mother told me what Sunday Breakfast was all about: offering HOPE to people who really needed it. I’ll never forget it.”**

Some 50 years later, after a career as a music teacher in the North Penn School District, Phil spotted an advertisement for volunteers in the Philadelphia Inquirer. “I said to Laurel, my wife, ‘Let’s check it out.’” It’s been **18 years later, and at least one day a week, sometimes more, Phil and Laurel make the trek** to 13th and Vine from their Bucks County home.



Over time, their work has changed with the needs. “We started with serving lunch, sorting donations and helping with mailings. Today Laurel works with the volunteer programs, and I do maintenance throughout the building.”

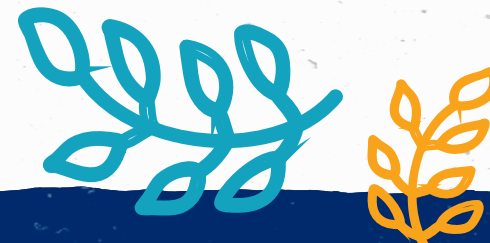
“It’s an old building that was never meant to be a home for up to 220 people,” Phil notes. “But now, it’s first class.” Phil’s been a big part of that. Now, it includes work like painting, replacing ceiling tiles, building walls and money saving projects like replacing fluorescent lights with LEDs and installing motion detectors. “Doing the lights takes some work, but we get a rebate from PECO, plus we save on our energy bill,” Phil explains with a bit of pride.

Over the years, Phil’s seen a lot more than nails, wires and paint cans. **“Without exception, the staff is totally supportive of the guests,”** he observes. Phil and Laurel have a part in that,

too. “We eat lunch with the guests. It’s a great opportunity to connect.”

From a thundering sermon reaching into a suburban boy’s home offering **HOPE** to everyone, to decades later as an integral part of that same ministry – for Phil, building repairs and maintenance leads directly to building lives – the guest’s and his, both. “Years ago, when we started helping at Sunday Breakfast, we thought of it as doing good for others. **I’m almost embarrassed to say that we’ve gained so much from volunteering,** that it’s done more good for us.”

Philly House’s hope is that everyone who walks through our doors is filled by God with joy and peace. Not just our shelter guests. Our **HOPE** for life transformation includes YOU, me – all of us.





COMPASSION: GOD'S LOVE & MERCY.

1 JOHN 3:17: IF ANYONE HAS MATERIAL POSSESSIONS AND SEES A BROTHER OR SISTER IN NEED BUT HAS NO PITY ON THEM, HOW CAN THE LOVE OF GOD BE IN THAT PERSON?



Spiritual Care involves bible studies, field trips, and book discussion.

COMPASSION saves a life.

At Philly House everyone deserves **COMPASSION** – guests, volunteers, staff, donors – everyone.

“When I first saw him, I thought he was a contractor,” Joseph confesses. **“I didn’t realize he was a guest until we I talked.”**

“One of the Shelter Ambassadors brought Jason to me. He started crying almost immediately. Before he walked in, he was on the roof of a parking garage. He was going to jump. **He didn’t know what brought him to my desk at Philly House.”**

Over the next hours, days and weeks a story unwound that was unique to Jason, and yet all-too common for a lot of our guests. While he had a good job and a good apartment, something was missing. **Jason was lonely. He had no purpose, and with it, no motivation.** He spiraled down, losing his job, his home,

and almost his life. He’d spend his days sitting on a park bench, watching happy people and families walk by and wondering, “why isn’t that me?”

“It was Friday, and we had a field trip coming up on Monday,” Joseph remembers. “I invited him on a hike we were taking in Wissahickon Park. He didn’t seem too sure about going, so I was surprised when he showed up and got into the van.”

It was just what Jason needed. **The peaceful, natural environment, the exercise, and the fellowship was life changing.** Jason began to open up, attending Bible study and the Philly House book club. You could see that he was becoming a new man.

Last December, **Jason left Philly House with a new job**, a new apartment and a new outlook on life, just four months after sitting down with Joseph.

“COMPASSION is what it’s all about here at Philly House,” Joseph reminds us. For Jason, it started with showing **COMPASSION** at a time of personal crisis. **“COMPASSION at the start and in all our work with guests is what Jesus calls us to do, and the outcomes show it.”**

COMPASSION is... **“To care for others in their time of need”**
(Michael, Shelter Guest)

In 2023, under the leadership of our Spiritual Care Coordinator, here are some results of crafting these intentional interactions:

2,681

total spiritual care interactions



526

or 30% unique men participating in spiritual care

128

received a Bible – 1st in his lifetime





BELONGING: TREATED LIKE FAMILY.

ROMANS 15:7: THEREFORE WELCOME ONE ANOTHER AS CHRIST HAS WELCOMED YOU, FOR THE GLORY OF GOD.

Robert found where he belongs.

The need to **BELONGING** – to be accepted into a group – is powerful. If you have a hard time breaking into groups, **the need to belong is so powerful that sometimes any crowd is attractive** if you're accepted, regardless of what they do. You just want to fit in.

Throughout his life, Robert wanted to fit in. He wanted to **BELONG**. And that got him into trouble.

Today, Robert BELONGS to God.

It took him almost a lifetime to find a group that accepts him for who he is. Not the high Robert. Not the go-along-to-get-along Robert. Not the do-bad-things to look "cool," Robert. Just Robert. The real Robert. The man God always wanted him to be.

That group? **Philly House**.



Robert's found his place in the Philly House kitchen. He volunteers washing dishes, cleaning tables and anything else that's needed. Ask him how he's doing, and he's proud to say, "I'm just doing the Lord's work!"

It's a far cry from his life before. **Today Robert is nearly a year sober from his drug habit.**

He's attending Narcotics Anonymous (NA) meetings. He's joined the Philly House Bible study and other groups. **He's also willing to get out to do things he never imagined... like sailing.**

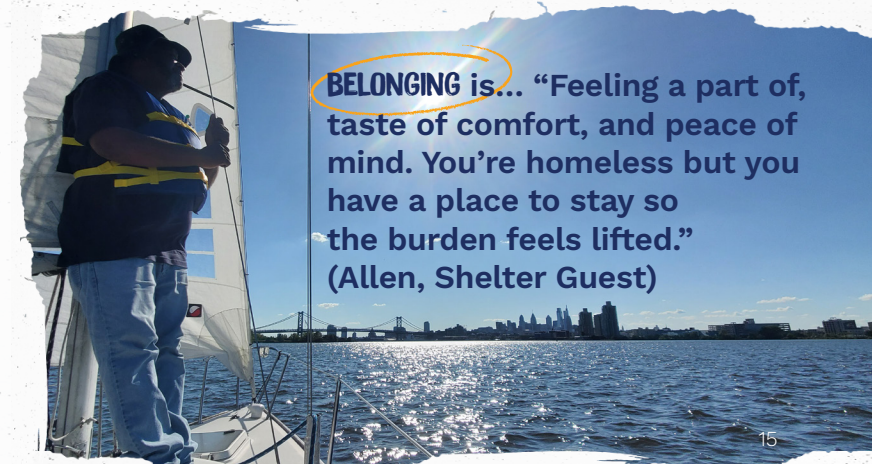
Philly House's CEO, aka certified sailor, Jeremy Montgomery thought that it would be fun for our guests to join him for a cruise on the Delaware River with the Liberty Sailing Club. The first time when Jeremy offered, Robert was the only one to go.

"It was cool out there," Robert grinned. "I had a great time." In fact, it was so good, he went again and recruited others to join him.

In his 60 years, Robert never imagined sailing

on the Delaware. The views, the open water, the camaraderie of working a complex system like a sailboat were foreign to him. His "new crew" was a far cry from who he used to hang with. It showed him the benefits of belonging to a place who cared about him for who he was, not for what he could do for them, then hiding from the results.

Robert has a place to BELONG at Philly House. He's found strength through meaningful work. He's found confidence by finding friends who model God's Love. And most important, by studying the Bible, **Robert found a family who challenge him to grow in ways he never imagined – even sailing!**



BELONGING is... "Feeling a part of, taste of comfort, and peace of mind. You're homeless but you have a place to stay so the burden feels lifted."
(Allen, Shelter Guest)

EXCELLENCE: WITH THE HIGHEST QUALITY AND INTENTION.

COLOSSIANS 3:23: WHATEVER YOU DO, WORK HEARTILY, AS FOR THE LORD AND NOT FOR MEN...



Tony proudly showcasing Philly House's own product labels for a future delivery.

Excellence. God's plan for each of us.

God isn't about mediocrity.

Moses didn't get half-way up Mt. Sinai to declare, "nice view" and come back down.

David didn't look at Goliath and think, "If I can just hit his knees..." Jesus didn't say, "Blessed are those who are 'kind of' committed to me."

NO. God wants the best from us, and that means EXCELLENCE.

Philly House is no different. That's a big reason why our partnership with Carversville Farm Foundation means so much. They share our commitment to EXCELLENCE.

Carversville Farm is a 100% organic food producer in Bucks County that could be providing their high-quality meats and vegetables to the region's five-star restaurants. But they don't. They have a higher mission: feeding the Philadelphia region's homeless and food insecure.

Why? Because everyone deserves **EXCELLENT** food, not just people who can afford it.

Co-founders, Tony and Amy D'Orazio, grew up in Philadelphia, America's poorest large city, and saw deep poverty up close. They saw that fresh, nutritious foods are often off the table for Philadelphians in poverty. They felt called to change this—by founding a philanthropic farm.

In 2013, they purchased land in Bucks County, PA, an hour north of Philadelphia, and set to work building a 350-acre organic farm of the highest ecological and quality standards - to grow chef-quality food, all for free donation to feed communities in need.

Philly House's first full year as a Carversville Farms' partner in 2023 was an incredible blessing. Each week like clockwork, hundreds of pounds of food arrived at our door – all free – all the best. And it wasn't just what they happened to have. The staff and volunteers at Carversville planted exactly what we requested and delivered it exactly when we needed it to meet



6,891
TOTAL LBS. OF FOOD

\$40,241.10
TOTAL VALUE

that week's menu requirements. That enabled our incredible kitchen staff to make nutritious, flavorful meals that guests rave about.

Of course, feeding people is core to what we do, but not all. Word of the great food gets around... bringing more people to each meal... and with them, more opportunities to provide the services needed to end their homelessness.

EXCELLENCE begets **EXCELLENCE**. Excellent food from Carversville leads to excellent meals at Philly House that leads to the excellent services and in the end, the opportunity to provide the services needed to end their homelessness.

EXCELLENCE. That's God's plan for each of us. With the highest standards of quality and intention!

HOMELESS SERVICES STATS

1,753 total unique men sheltered: representing 30% of Philly's total homeless male population

1,227 70% = 1 shelter visit enrollment

508 29% = 2-5 shelter visits

18 1% = 5+ shelter visits



“Philly House is emergency triage for homelessness much like ERs are for a hospital,” reflects the Director of Homeless Services Erin Linden.

“You never know the needs of the person coming through the door. Food and shelter are just the start.” Everyday, our Staff help men navigate out of their immediate crisis.

Yet, just like local hospitals and jails, recidivism is a constant concern. The meaning of **RECIDIVISM** is: a tendency to relapse into a previous condition or mode of behavior, such as crime or addiction or homelessness. **Are we building stability or dependency? We ask this question daily.**

Due to intensive data collection efforts in 2022 and 2023, Philly House can now successfully showcase this outcome: 62% of its total sheltered men (3,338) only enrolled one-time in our shelter within that 2 year span, meaning that we helped them to transition to more stable solutions!

2,968

of case management engagements



46%

% of unique men participated in case management

801

of unique men participated in case management



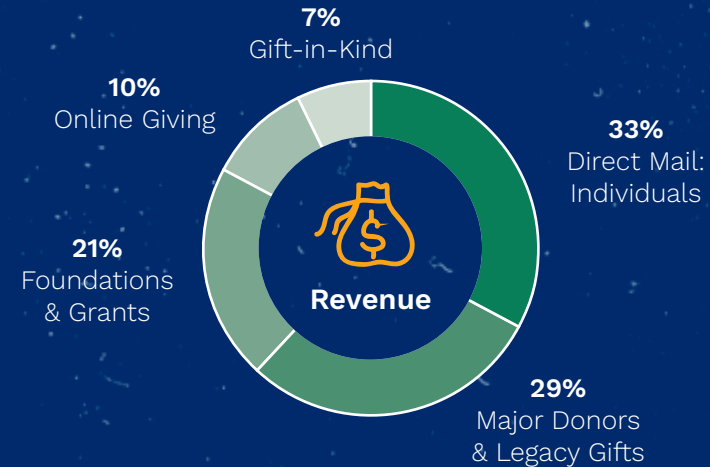
19%

% of the 801 men who participated with case management who were exited to long term housing solutions

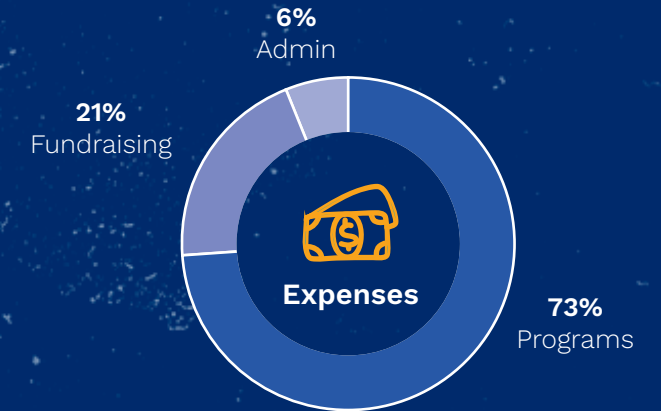
152

of men who participated with case management who were exited to long term housing solutions

FINANCIALS FROM AUDIT & 990



Revenue Total: \$3,554,591



Expense Total: \$3,822,603

For fully audited financial statements for FY2023 ending June 30, 2023, please visit our website at phillyhouse.org/about/financials.





One of our greatest assets is a dedicated and called team of Staff, who come everyday to love and care for our Guests.

DONATE TODAY

Mail a check to:

Philly House

P.O. Box 297

Philadelphia, PA 19105

WEB phillyhouse.org

PHONE 215.922.6400 X1005

EMAIL info@phillyhouse.org

VOLUNTEER

Sign up online:

PHILLYHOUSE.ORG

FOLLOW US

@phillyhomeless

