

CEO CORNER



The face of homelessness—and the capabilities of those who provide services to people experiencing homelessness—is changing. On my office wall is this 1914 picture of men lined up at our old N. 12th St. building. They're in top hats and suits waiting for what could be their only meal of the day. It's certainly not how homeless, hungry men look today!



But in 1914, like now, **homelessness is an extremely complex issue.** Sure, it's not having somewhere to sleep. But that's a symptom of bigger problems. **Addiction, family estrangement, violence, traumatic events, and mental illness are all part of the mix.**

Among the causes, mental illness is increasingly recognized as a primary reason for homelessness. According to our partner Citygate Network's 2023 Snapshot Survey, **the percentage of guests self-reporting mental illness increased in 2023** across the U.S., including Philly House. It's not a blip. It's a long-term trend. The survey exposed that **almost one-half of all persons accessing services at these Christian organizations struggled with some level of mental illness.**

Clearly, it's not enough to meet the crisis solely ministering as homeless shelters or soup kitchens. **At Philly House, we're constantly reimagining our services** to align with the changing needs reflected in our population. We need to help people reach their God-given potential. Our services are needed now more than ever!



For instance, just how Jesus in the Gospels shares the 'Parable of the Lost Sheep' – **we are called to seek and to save the one, while leaving the safe fold of the 99.** In a recent appeal letter, I told you about **'Jacob' - the guy who slept all winter long on the steam grate,** outside my office window. Despite my daily prayers and efforts to persuade him to come inside, he only trusted the loving smile of our Director of Homeless Services, Erin. **When he finally entered our doors, we discovered his schizophrenia.** We helped him as

much as possible, and finally, with the aid of a consulting psychiatrist and a local magistrate, Jacob was declared "302," for involuntary commitment to an inpatient psychiatric unit. Released from the mental hospital after a few weeks, Jacob chose to return to us. The next day, we facilitated a reunification with his mother – she thought that she was his 'trigger' and offered to move out of her home so Jacob could live with his brother.

"Son, come home! Live with your brother!" ... "Mom, I want to live with you!" muttered Jacob. She picked him up the very next day to bring him home, because **he is now properly medicated and processing better decisions with a sounder mind – and a bigger smile!** Yes, tears were in our eyes to see mother and son embrace, and then walk down the sidewalk hand-in-hand.

I struggle to tell these stories because most may only wish to hear about the successful '99' in the fold. The stories of the 'one' are hard. They're gritty, dirty, and don't always end well.

Please keep 'Jacob' in your prayers for his continual recovery and healing in the care of his own mother. With your support, our doors remain open to help more 'Jacobs' fulfilling the heart of our Father in Heaven.

DONATE TODAY

Mail a check to:

Philly House

P.O. Box 297

Philadelphia, PA 19105

WEB phillyhouse.org

PHONE 215.922.6400 X1005

EMAIL info@phillyhouse.org

VOLUNTEER

Sign up online:

PHILLYHOUSE.ORG

FOLLOW US

@phillyhomeless



FORMERLY



Help us provide hope to the homeless, hungry and hurting of Philadelphia.

GIVE.PHILLYHOUSE.ORG



HOPE LIVES HERE

FALL 2023 NEWSLETTER



HOMELESS IS NO GAME – BUT GAMES HELP THE HOMELESS.



CHURCH MEMBER WENT TO EACH BED OF OUR SHELTER GUESTS AND **PRAYED FOR HIM BY NAME.**

Games bring us together. They bond us in a common purpose and create a sense of belonging.

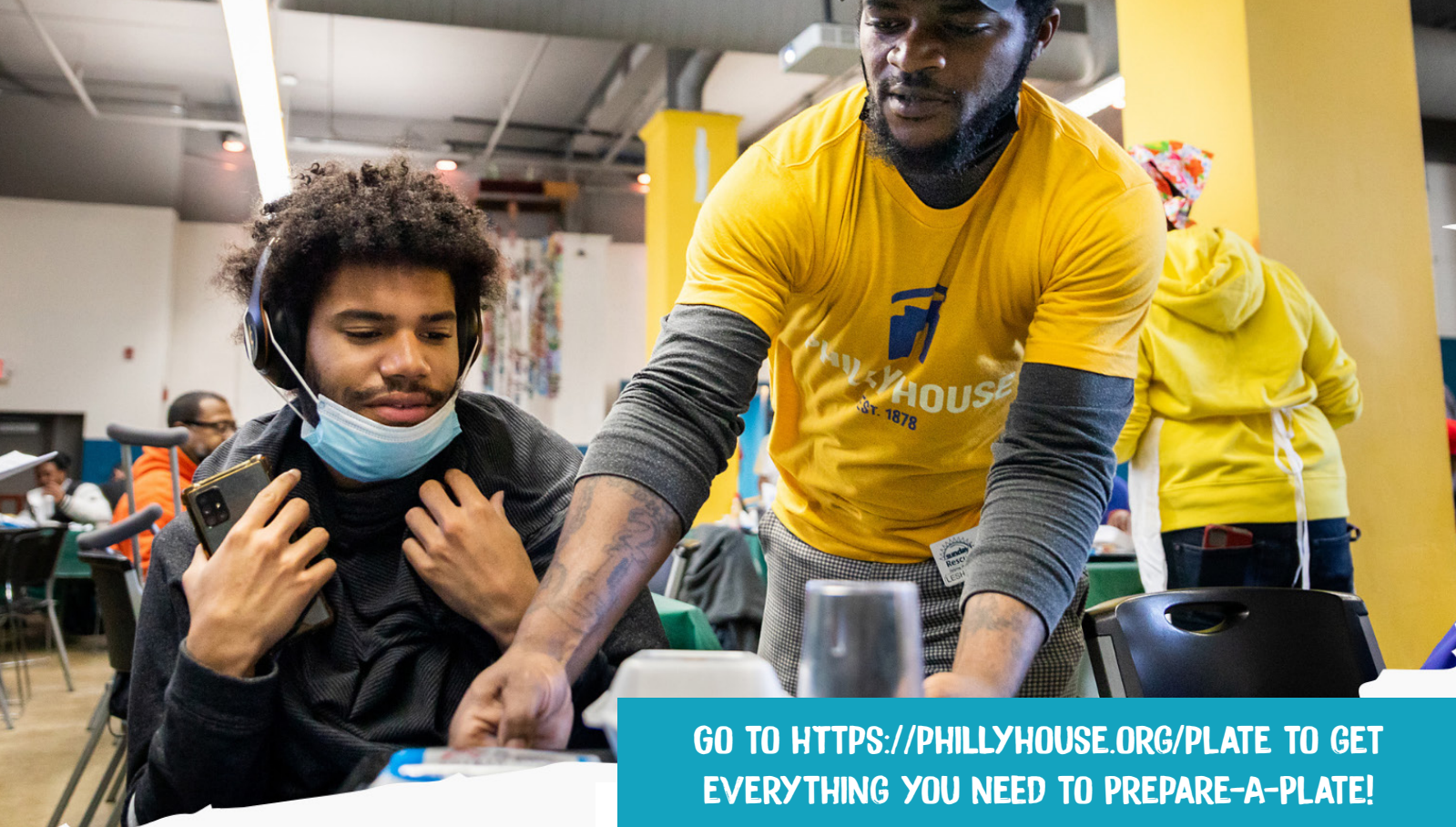
Our friends at Epic Church know that a simple board game can make all the difference in a homeless man's day – especially during their annual "This is LOVE" church-wide campaign. **Playing a game with someone makes him feel normal.** It takes his mind off the rigors of the street. It's a time to laugh, and talk, and just enjoy life for a while.

But the men and women of Epic Church did more than play games. They prayed. No, they didn't pray to win a game. And it wasn't a mass-prayer, either. Church member went to each bed of our shelter guests and prayed for him by name. They prayed that he would win against the struggles keeping him on the street. They prayed that he would find solace in what Philly House could offer and take the next step to find a new life – a life where he played games in his own home where he came back to after working his own job, with food of his own.

It was a great day and we loved having them, and at the day's end, **they presented a love-offering of \$8,000** so we could continue our work.

If you want your group to have a meaningful volunteer experience, let Philly House volunteer coordinator Jaqui Watkins know. Reach out to her at jaqui@phillyhouse.org, or 215-922-6400 x1007.





GO TO [HTTPS://PHILLYHOUSE.ORG/PLATE](https://phillyhouse.org/plate) TO GET EVERYTHING YOU NEED TO PREPARE-A-PLATE!

ALL IT TAKES TO PREPARE-A-PLATE, IS YOU!



Prepare-A-Plate is back! What's Prepare-A-Plate? It's Philly House's peer-to-peer fundraising campaign to prepare a plate of food for every guest who shows up for our annual Thanksgiving dinner.

Word about the great Philly House food is already on the street. Every year, we host more and more people for Thanksgiving. We even added a heated outdoor lounge with Adirondack chairs, snacks and a big-screen TV for watching football!

But **Thanksgiving at Philly House is more than food and a party.** It's about community, and helping every homeless person remember what life was like before they lived on the street – and that they can have that life again, starting at Philly House!

The 2023 Prepare-A-Plate goal is \$30,000. Can you help us make – or break – this goal? It's easy to take part. Even better, form a team and compete with other teams! We have all the information ready for you: from ideas to raise money, graphics and illustrations and even social media messages.



DON'T LEAVE MONEY, OR FOOD, ON THE TABLE!

It's unbelievable! An estimated four to seven BILLION dollars in corporate matching gifts goes unclaimed each by the 26 million people who work for matching gift companies, according to Double the Donation.

Could that be you? Could you *increase your gift to Philly House homeless at no cost to you?* How can you tell?

When you make your online gift to Philly House, just check the box that says, "See if your employer will match your donation." When the box pops up, put in the name of your company. If your company matches gifts, you'll know instantly.

Immediately assess your eligibility and gain access to detailed information about your employer's corporate giving program.

If your company isn't listed, make sure to check with your company's HR department. It's possible that your employer offers matching gifts.

We wish we could submit the required form for you, but unfortunately the employee must submit the matching gift request to their employer directly. We appreciate you taking a few minutes to double your donation ... just by starting with the click of a box!

Mailing in a check? No problem. We can check the matching gift company list for you! Just call 215-922-6400 x1004, or email donations@phillyhouse.org

COULD YOU INCREASE YOUR GIFT TO PHILLY HOUSE HOMELESS AT NO COST TO YOU?

**BECAUSE YOU CARE...
BECAUSE YOU GIVE**

JAN. 1 - JULY 31, 2023

58,749 Meals served

1,276 Total Sheltered Men

195 Seniors Sheltered (age 60+)

124 Average Sheltered Men per night

36 "Code Blue/Code Red Nights" and 180 total men sheltered

102 Placements into Long-term Housing

1,977 Total engaged in Spiritual Care w/ 382 unique men

1,681 Total Case Management Engagements

PHILLY HOUSE
EST. 1878

Your support makes these services possible. Thank You!

PHILLYHOUSE.ORG